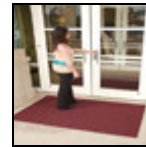
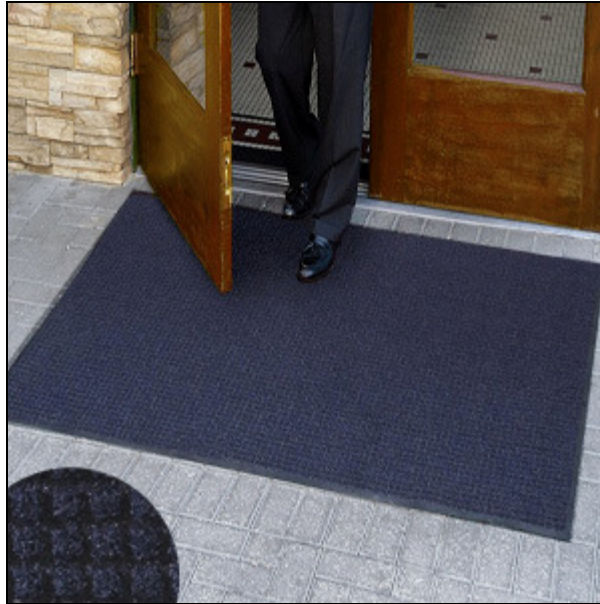


Brush Hog Plus Entrance Mats



Brush Hog Plus Entrance Mats combine the aggressively scraping turf-pile nylon surface of the standard Brush Hog mats with the time-tested waffle pattern of the Waterhog Classic Mats.

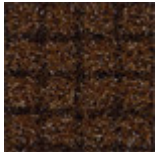
- The Brush Hog Plus mat's heavy-duty, turf-pile surface material works its way into the grooves of shoes, expertly scraping off dirt, debris and moisture.
- The turf material is manufactured from a solution dyed nylon that fade and rot resistant, even with constant exposure to Ultraviolet light from the sun, rain water, snow and salts.
- A sturdy rubber backing and borders hold the turf in place and does not break off or warp despite the environment the mats are used in. Brush Hog Plus mats work well both in doors and outside.
- Each Brush Hog Mat is made with 20% post consumer recycled content.
- To clean, simply shake out, vacuum or hose off and air dry.

Standard Sizes (Approximate)

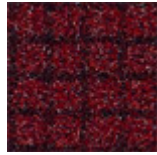
Size	Qty. 1	Qty. 2-10	Qty. 11-25	Qty. 26+
2' x 3'	\$62.88	\$60.56	\$58.84	\$57.72
3' x 5'	\$156.60	\$154.48	\$152.24	\$151.16
3' x 10'	\$313.32	\$310.60	\$307.64	\$305.56
4' x 6'	\$249.04	\$245.52	\$241.36	\$237.68
4' x 8'	\$335.52	\$331.32	\$327.72	\$324.32
5.4' x 8'	\$496.04	\$488.80	\$476.52	\$468.80

Standard Colors

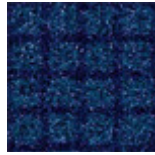
Turf Black



Turf Brown



Turf Burgundy



Turf Navy



Turf Green